



Smart Omni Mobile Scanner



Model Name : SHARK-HE

The SHARK-HE Scanner provides enterprise 1D/2D/QR barcode scanning technology, whenever and wherever you need it

Simply, easily and cost-effectively. Just pair this Bluetooth4.0 & USB with your mobile device and attach the mobile device to the SHARK-HE

For a single-handed Barcode reader solution.

Style – Comfort – Flexibility – Performance – Battery life everyone can appreciate



PHYSICAL SPEC

Dimensions Gun-Type 13cm(H) x 8cm(W) x 16cm(L)

Weight Barcode Type : 330g

Battery Gun : 2600mA(Change/Rechargeable)
Main : 3000mA(Only Rechargeable)

Connection With phone USB or Bluetooth



USER ENVIRONMENT

Drop Spec	1.5m drops to concrete
Operating Temp.	-10°C to 60°C
Storage Temp.	-30°C to 80°C
Humidity	5~70% non-condensing
Sealing	IP53
Display	1.3" inch OLED LCD
Charger	Wireless charging with Cradle
LED Status	Status of charging/Data/Bluetooth

COMMUNICATION

Bluetooth Bluetooth Version 2.1 or 4.0

USB USB 2.0 Virtual com port

HID Keyboard Edge Mode

Barcode Performance

Barcode Engine MOTORORA 2D Special Imager

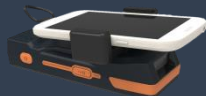
Scan 1D / 2D / QR / Data-Matrix Code
DPM code (타공 DPM 인식, Special code)

- 초소형 DPM 인식 (Micro)
- Data양이 많고/빛 반사가 심한 Laser 마킹 인식을 탁월

SHARK-HE 다양한 형태



Barcode Only (Gun)



Barcode Only (W/O Gun)



At the same time charging Scanner & Phone



Wireless Charger Cradle





Component of SHARK-HE



PATENT OF KOREA

No.	Component
1	Barcode Key (Hot Key)
2	Barcode Key (Hot Key)
3	Gun trigger
4	Display Panel
5	Power Button
6	Battery Charging LED
7	Bluetooth Paring LED
8	Data Communication LED
9	HID Communication For Charge Phone & Scanner
10	Smart Phone or Tab (~8inch)
11	Barcode Special 2D Module
12	Wireless Charger
13	Wireless Charger Cradle
14	Smartphone Holder

Android Demo Application

